

HOSPITAL INFRASTRUCTURE INSIGHT INDONESIA 2020

Installed Base | Opportunity | Health Personnel
www.emerg-inc.com



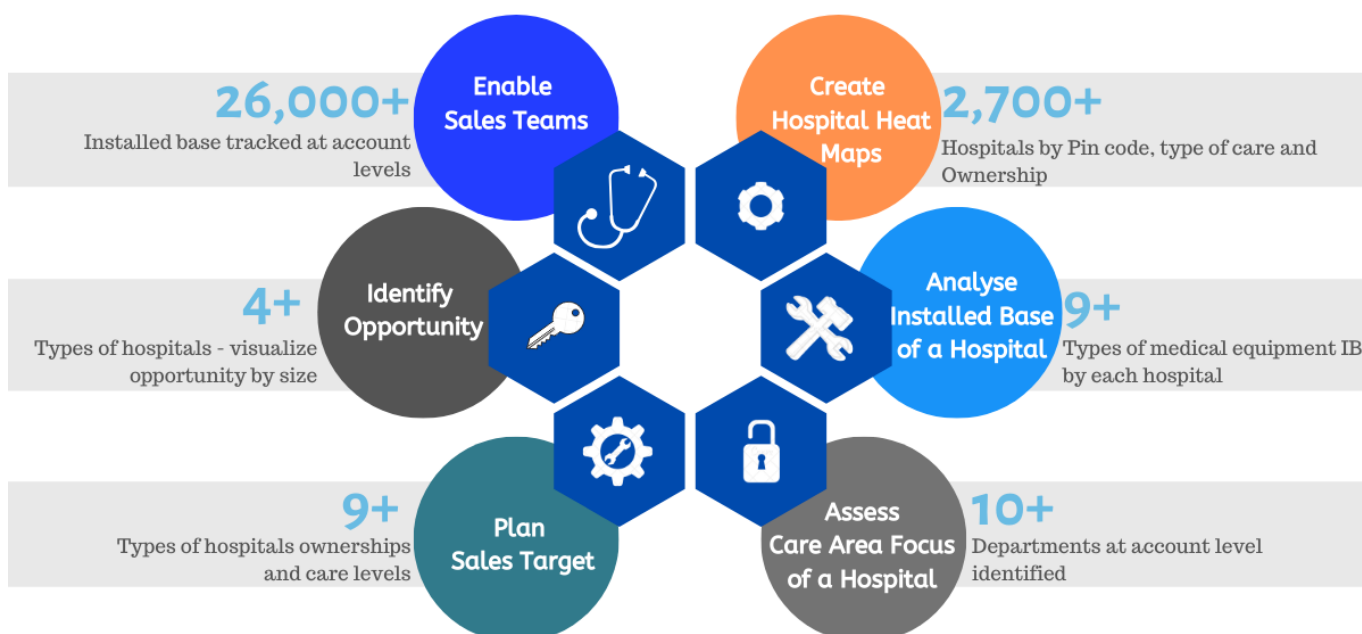
2,764 Hospitals covered across the country.

With Less than 5% of the Total Beds in the Country Equipped to Provide Intensive Care Services, Indonesia’s Developmental Policies Will Need to Focus Extensively on Healthcare Investments

As of 2019, about 2,764 hospitals were functioning in Indonesia. Around 70 of them were equipped to provide tertiary care services. Indonesia is expected to focus on improving tertiary care services, to bridge this gap in the immediate term, and improve distribution of healthcare services. With their Universal Health Coverage Policy now committing to serve 80% of the population, load distribution will be a factor that will need continuous attention. Due to the same reason, the country’s bold \$400BN total infrastructure development plan for 2020-2024 is expected to focus on healthcare as one of the key areas of investment.

According to [EMERG’s new HospeTrack Hospital Intelligence for Indonesia](#), the largest opportunity in the immediate term will be around infrastructure build-up necessary for expanding tertiary care services. This will include growth in anaesthesia machines, ventilators, operating rooms, CT and MRI scanners. As of 2019, penetration of advanced imaging modalities like MRI and CT was less than 30-40% in the 70 tertiary care hospitals. The data in the report also shows that there are less than 151 Cath Labs, 746 CT scanners, 197 MRI scanners between the country’s 2,764 hospitals. Both the public sector hospitals and the private health sector could potentially focus on bolstering the above installed base in the next 3-4 years.

In terms of intensive care services, there are close to 8,000 total ICU beds in the country – estimated to be lower than 5% of the total inpatient beds - another area that could witness improved efforts and investments, especially from the public sector. Procurement in terms of patient monitoring systems, ventilators and hospital information technologies to improve intensive care services, is expected to be a key investment area for the country in the next five years.



The report provides account-level directional detail on total beds, ICU beds, ORs, ventilators, incubators, etc., along with Anaesthesia Machines, C-Arms, Cath Labs, PET, Nuclear, SPECT, CT, MRI scanners, Ultrasound and X-Ray machines, making it the only source of hospital-level intelligence for medical equipment installed base in Indonesia. This dataset is a valuable tool for any organization that is in the process of optimizing sales targets, estimating market potential or building an account management plan in Indonesia.

The report is a craftily designed dataset that provides a graphical summary of the health infrastructure in the country apart from an account-level view of resources, directional information on medical device installed base, hospital demographic and care services. The report commits itself as a tool to understand, visualize, and identify opportunity pockets at the hospital-level for medical devices manufacturers, and digital healthcare companies.

Key medical device companies featured in the dataset include: Dräger Medical, GE Healthcare, Heyer, Hostech, Allengers Medical System, Siemens Healthcare, Toshiba (Canon Medical Systems), Philips Healthcare, Esaote SpA, Euro Columbus, Hitachi Medical Systems, Mindray, Time Medical Systems, Samsung, GMM, Hologic, SIUI, Alpinion, Indoray

For more information, contact us at www.emerg-inc.com



Bengaluru. Chicago. Singapore

Unarticulated Insight, Clinical Immersion.



For Sales Queries and Questions:

Email: letspeak@emerg-inc.com

LinkedIn:

<https://www.linkedin.com/company/ethnographic-medical-research-group>

www.emerg-inc.com